

**Population Change in the United States:
Implications for Human and Socioeconomic Resources
in the Southwest Border and Non-Border Areas in the
21st Century**

by
Steve H. Murdock

Institute for Demographic and Socioeconomic Research -
University of Texas at San Antonio
and
Regional Center for Health Workforce Studies -
University of Texas Health Science Center
at San Antonio

**Major Demographic Trends
Affecting the Future**

- **Rates, Sources and Distribution of the Population**
- **Increase in the Minority Population**
- **Aging of the Population**

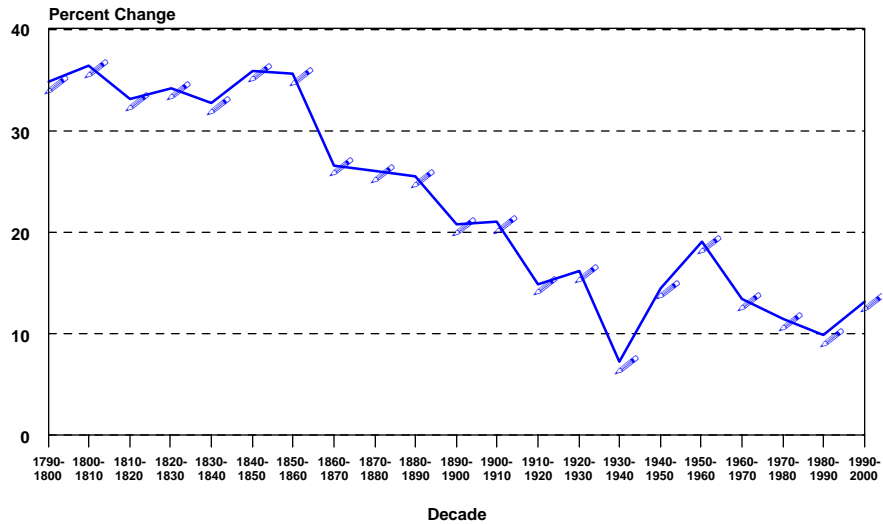
**Total Population and Percent Population Change
in Texas and the United States, 1850-2005**

| Year* | Total Population | | Percent Change | |
|-------|------------------|-------------|----------------|------|
| | Texas | U.S. | Texas | U.S. |
| 1850 | 212,592 | 23,191,876 | --- | --- |
| 1860 | 604,215 | 31,443,321 | 184.2 | 35.6 |
| 1870 | 818,579 | 39,818,449 | 35.5 | 26.6 |
| 1880 | 1,591,749 | 50,155,783 | 94.5 | 26.0 |
| 1890 | 2,235,527 | 62,947,714 | 40.4 | 25.5 |
| 1900 | 3,048,710 | 75,994,575 | 36.4 | 20.7 |
| 1910 | 3,896,542 | 91,972,266 | 27.8 | 21.0 |
| 1920 | 4,663,228 | 105,710,620 | 19.7 | 14.9 |
| 1930 | 5,824,715 | 122,775,046 | 24.9 | 16.1 |
| 1940 | 6,414,824 | 131,669,275 | 10.1 | 7.2 |
| 1950 | 7,711,194 | 150,697,361 | 20.2 | 14.5 |
| 1960 | 9,579,677 | 179,323,175 | 24.2 | 19.0 |
| 1970 | 11,196,730 | 203,302,031 | 16.9 | 13.4 |
| 1980 | 14,229,191 | 226,545,805 | 27.1 | 11.4 |
| 1990 | 16,986,510 | 248,709,873 | 19.4 | 9.8 |
| 2000 | 20,851,820 | 281,421,906 | 22.8 | 13.2 |
| 2005 | 22,859,968 | 296,410,404 | 9.6 | 5.3 |

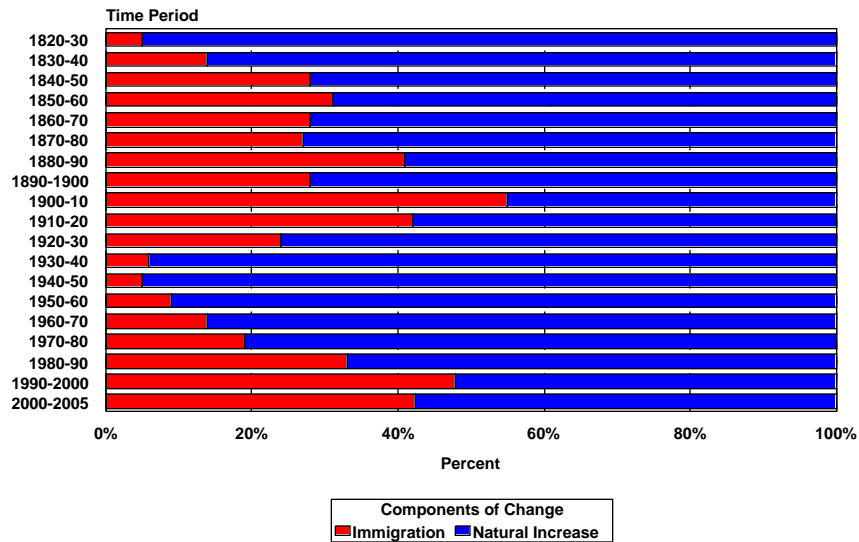
* All values for the decennial dates are for the indicated census year. Values for 2005 are as estimated by the U.S. Bureau of the Census.

Source: Derived from U.S. Bureau of the Census Estimates for dates indicated by the Texas State Data Center, University of Texas at San Antonio

Percent Change in the U.S. Population, 1790-2000



Percent of United States Population Change Due to Immigration and Natural Increase, 1820 to 2005



Immigration into the United States, by Period and Area of Origin of Immigrants, 1820-2004 (numbers in thousands)

| Time Period | Number of Immigrants | Percent by Area of Origin | | | | | All Other |
|-------------|----------------------|---------------------------|-------|--------|---------------|--------|-----------|
| | | Europe | Asia | Canada | Latin America | Africa | |
| 1820-1830 | 152 | 70.14 | 0.02 | 1.64 | 6.23 | 0.01 | 21.96 |
| 1831-1840 | 599 | 82.73 | 0.01 | 2.27 | 3.30 | 0.01 | 11.68 |
| 1841-1850 | 1,713 | 93.24 | 0.01 | 2.44 | 2.93 | 0.00 | 1.38 |
| 1851-1860 | 2,598 | 94.40 | 1.60 | 2.28 | 0.60 | 0.01 | 1.11 |
| 1861-1870 | 2,315 | 89.21 | 2.80 | 6.65 | 0.56 | 0.01 | 0.77 |
| 1871-1880 | 2,812 | 80.79 | 4.42 | 13.64 | 0.73 | 0.01 | 0.42 |
| 1881-1890 | 5,247 | 90.26 | 1.33 | 7.50 | 0.65 | 0.02 | 0.24 |
| 1891-1900 | 3,688 | 96.41 | 2.03 | 0.09 | 0.97 | 0.01 | 0.49 |
| 1901-1910 | 8,795 | 91.59 | 3.68 | 2.07 | 2.07 | 0.08 | 0.54 |
| 1911-1920 | 5,736 | 75.35 | 4.31 | 12.94 | 7.00 | 0.15 | 0.25 |
| 1921-1930 | 4,107 | 59.97 | 2.73 | 22.51 | 14.42 | 0.15 | 0.22 |
| 1931-1940 | 528 | 65.77 | 3.14 | 20.54 | 9.74 | 0.33 | 0.48 |
| 1941-1950 | 1,035 | 60.01 | 3.58 | 16.59 | 17.69 | 0.71 | 1.42 |
| 1951-1960 | 2,515 | 52.70 | 6.09 | 15.03 | 24.61 | 0.56 | 10.01 |
| 1961-1970 | 3,322 | 33.82 | 12.87 | 12.44 | 39.23 | 0.87 | 0.77 |
| 1971-1980 | 4,493 | 17.81 | 35.35 | 3.78 | 41.19 | 1.80 | 0.07 |
| 1981-1990 | 7,338 ^a | 10.38 | 37.31 | 2.14 | 47.13 | 2.41 | 0.63 |
| 1991-1999 | 8,246 | 14.87 | 30.80 | 2.07 | 47.53 | 3.81 | 0.92 |
| 2000-2004 | 4,630 | 15.35 | 33.09 | 1.83 | 43.00 | 5.92 | 0.81 |

^aIncludes persons who were granted permanent residence under the legalization program of the Immigration Reform and Control Act of 1986.

Source: *Yearbook of Immigration Statistics*, Washington, DC: U.S. Department of Homeland Security, Office of Immigration Statistics

**Ten Fastest Growing States (in Numerical Terms)
in the United States, 1990-2000**

| State | 1990 Population* | 2000 Population* | Numerical Change 1990-2000 | Percent Population Change 1990-2000 |
|----------------|---------------------|---------------------|----------------------------------|--|
| California | 29,760,021 | 33,871,648 | 4,111,627 | 13.8 |
| Texas | 16,986,510 | 20,851,820 | 3,865,310 | 22.8 |
| Florida | 12,937,926 | 15,982,378 | 3,044,452 | 23.5 |
| Georgia | 6,478,216 | 8,186,453 | 1,708,237 | 26.4 |
| Arizona | 3,665,228 | 5,130,632 | 1,465,404 | 40.0 |
| North Carolina | 6,628,637 | 8,049,313 | 1,420,676 | 21.4 |
| Washington | 4,866,692 | 5,894,121 | 1,027,429 | 21.1 |
| Colorado | 3,294,394 | 4,301,261 | 1,006,867 | 30.6 |
| Illinois | 11,430,602 | 12,419,293 | 988,691 | 8.6 |
| New York | 17,990,455 | 18,976,457 | 986,002 | 5.5 |

* Population values are decennial census counts for April 1 of the year indicated

**Ten Fastest Growing States in Numerical Terms
in the United States, 2000-2005**

| State | 2000 Population* | 2005 Population* | Numerical Change 2000-2005 | Percent Change 2000-2005 |
|----------------|---------------------|---------------------|----------------------------------|--------------------------------|
| California | 33,871,648 | 36,132,147 | 2,260,499 | 6.7 |
| Texas | 20,851,820 | 22,859,968 | 2,008,148 | 9.6 |
| Florida | 15,982,378 | 17,789,864 | 1,807,486 | 11.3 |
| Georgia | 8,186,453 | 9,072,576 | 886,123 | 10.8 |
| Arizona | 5,130,632 | 5,939,292 | 808,660 | 15.8 |
| North Carolina | 8,049,313 | 8,683,242 | 633,929 | 7.9 |
| Virginia | 7,078,515 | 7,567,465 | 488,950 | 6.9 |
| Nevada | 1,998,257 | 2,414,807 | 416,550 | 20.8 |
| Washington | 5,894,121 | 6,287,759 | 393,638 | 6.7 |
| Colorado | 4,301,261 | 4,665,177 | 363,916 | 8.5 |

* Population values are decennial census counts for April 1 for 2000 and estimates for July 1 for 2005.

Source: Derived from U.S. Bureau of the Census Estimates for dates indicated by the Texas State Data Center, University of Texas at San Antonio

**Ten Fastest Growing States in Percentage Terms
in the United States, 1990-2000**

| State | 1990 Population* | 2000 Population* | Numerical Change 1990-2000 | Percent Population Change 1990-2000 |
|----------------|---------------------|---------------------|----------------------------------|--|
| Nevada | 1,201,833 | 1,998,257 | 796,424 | 66.3 |
| Arizona | 3,665,228 | 5,130,632 | 1,465,404 | 40.0 |
| Colorado | 3,294,394 | 4,301,261 | 1,006,867 | 30.6 |
| Utah | 1,722,850 | 2,233,169 | 510,319 | 29.6 |
| Idaho | 1,006,749 | 1,293,953 | 287,204 | 28.5 |
| Georgia | 6,478,216 | 8,186,453 | 1,708,237 | 26.4 |
| Florida | 12,937,926 | 15,982,378 | 3,044,452 | 23.5 |
| Texas | 16,986,510 | 20,851,820 | 3,865,310 | 22.8 |
| North Carolina | 6,628,637 | 8,049,313 | 1,420,676 | 21.4 |
| Washington | 4,866,692 | 5,894,121 | 1,027,429 | 21.1 |

* Population values are decennial census counts for April 1 of the year indicated

**Ten Fastest Growing States in Percentage Terms
in the United States, 2000-2005**

| State | 2000 Population* | 2005 Population* | Numerical Change 2000-2005 | Percent Population Change 2000-2005 |
|----------------|---------------------|---------------------|----------------------------------|--|
| Nevada | 1,998,257 | 2,414,807 | 416,550 | 20.8 |
| Arizona | 5,130,632 | 5,939,292 | 808,660 | 15.8 |
| Florida | 15,982,378 | 17,789,864 | 1,807,486 | 11.3 |
| Georgia | 8,186,453 | 9,072,576 | 886,123 | 10.8 |
| Utah | 2,233,169 | 2,469,585 | 236,416 | 10.6 |
| Idaho | 1,293,953 | 1,429,096 | 135,143 | 10.4 |
| Texas | 20,851,820 | 22,859,968 | 2,008,148 | 9.6 |
| Colorado | 4,301,261 | 4,665,177 | 363,916 | 8.5 |
| North Carolina | 8,049,313 | 8,683,242 | 633,929 | 7.9 |
| Delaware | 783,600 | 843,524 | 59,924 | 7.6 |

* Population values are decennial census counts for April 1 for 2000 and estimates for July 1 for 2005.

Source: Derived from U.S. Bureau of the Census Estimates for dates indicated by the Texas State Data Center, University of Texas at San Antonio

**Ten Largest States in United States by Population
Size in 2000 Ranked by Population Size in 2000**

| State | 1990 Population* | 2000 Population* | Numerical Change 1990-2000 | Percent Change 1990-2000 |
|--------------|---------------------|---------------------|----------------------------------|--------------------------------|
| California | 29,760,021 | 33,871,648 | 4,111,627 | 13.8 |
| Texas | 16,986,510 | 20,851,820 | 3,865,310 | 22.8 |
| New York | 17,990,455 | 18,976,457 | 986,002 | 5.5 |
| Florida | 12,937,926 | 15,982,378 | 3,044,452 | 23.5 |
| Illinois | 11,430,602 | 12,419,293 | 988,691 | 8.6 |
| Pennsylvania | 11,881,643 | 12,281,054 | 399,411 | 3.4 |
| Ohio | 10,847,115 | 11,353,140 | 506,025 | 4.7 |
| Michigan | 9,295,297 | 9,938,444 | 643,147 | 6.9 |
| New Jersey | 7,730,188 | 8,414,350 | 684,162 | 8.9 |
| Georgia | 6,478,216 | 8,186,453 | 1,708,237 | 26.4 |

* Population values are decennial census counts for April 1 of the year indicated

**Ten Largest States in United States by Population
Size in 2000 Ranked by Population Size in 2005**

| State | 2000 Population* | 2005 Population* | Numerical Change 2000-2005 | Percent Change 2000-2005 |
|--------------|---------------------|---------------------|----------------------------------|--------------------------------|
| California | 33,871,648 | 36,132,147 | 2,260,499 | 6.7 |
| Texas | 20,851,820 | 22,859,968 | 2,008,148 | 9.6 |
| New York | 18,976,457 | 19,254,630 | 278,173 | 1.5 |
| Florida | 15,982,378 | 17,789,864 | 1,807,486 | 11.3 |
| Illinois | 12,419,293 | 12,763,371 | 344,078 | 2.8 |
| Pennsylvania | 12,281,054 | 12,429,616 | 148,562 | 1.2 |
| Ohio | 11,353,140 | 11,464,042 | 110,902 | 1.0 |
| Michigan | 9,938,444 | 10,120,860 | 182,416 | 1.8 |
| Georgia | 8,186,453 | 9,072,576 | 886,123 | 10.8 |
| New Jersey | 8,414,350 | 8,717,925 | 303,575 | 3.6 |

* Population values are decennial census counts for April 1 for 2000 and estimates for July 1 for 2005.

Source: Derived from U.S. Bureau of the Census Estimates for dates indicated by the Texas State Data Center, University of Texas at San Antonio

**Proportion of U.S. Population by Race/Ethnicity
in Each Region in 2000**

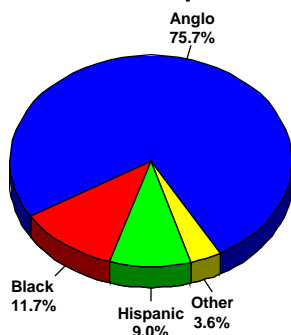
| Region | Total | White | Black | Other | Hispanic | Anglo |
|------------|-------|-------|-------|-------|----------|-------|
| Northeast | 19.0 | 19.6 | 17.3 | 18.4 | 14.9 | 20.1 |
| Midwest | 22.9 | 25.5 | 19.0 | 12.5 | 8.8 | 26.8 |
| South | 35.6 | 34.4 | 54.5 | 20.7 | 32.8 | 33.8 |
| West | 22.5 | 20.5 | 9.2 | 48.4 | 43.5 | 19.3 |
| U.S. Total | 100.0 | 100.0 | 100.0 | 100.0 | 100.0 | 100.0 |

**Population 1980 and 1990, Percent Change in Population 1980
to 1990 and Proportion of Population 1980 and 1990 by
Ethnicity for Texas and the United States**

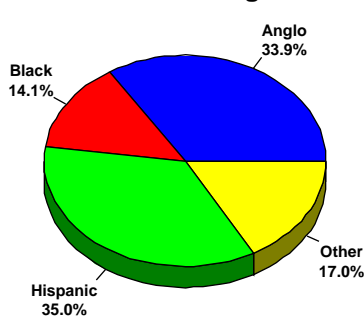
| Ethnic Category | Number | | Percent Change 1980-90 | Proportion of Population | |
|----------------------|-------------|-------------|------------------------------|-----------------------------|-------|
| | 1980 | 1990 | | 1980 | 1990 |
| Texas | | | | | |
| Anglo | 9,350,297 | 10,291,680 | 10.1 | 65.7 | 60.6 |
| Black | 1,692,542 | 1,976,360 | 16.8 | 11.9 | 11.6 |
| Hispanic | 2,985,824 | 4,339,905 | 45.4 | 21.0 | 25.6 |
| Other | 200,528 | 378,565 | 88.8 | 1.4 | 2.2 |
| Total | 14,229,191 | 16,986,510 | 19.4 | 100.0 | 100.0 |
| United States | | | | | |
| Anglo | 180,602,838 | 188,128,296 | 4.2 | 79.7 | 75.7 |
| Black | 26,091,857 | 29,216,293 | 12.0 | 11.5 | 11.7 |
| Hispanic | 14,603,683 | 22,354,059 | 53.1 | 6.5 | 9.0 |
| Other | 5,247,427 | 9,011,225 | 71.7 | 2.3 | 3.6 |
| Total | 226,545,805 | 248,709,873 | 9.8 | 100.0 | 100.0 |

United States Population by Race/Ethnicity in 1990 and Net Change Due to Each Racial/Ethnic Group 1980-1990

Percent of Population



Net Change

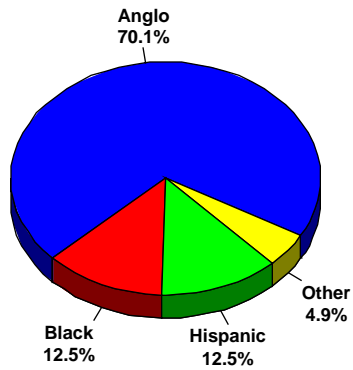


Population 1990 and 2000, Percent Change in Population 1990 to 2000 and Proportion of Population 1990 and 2000 by Ethnicity for Texas and the United States

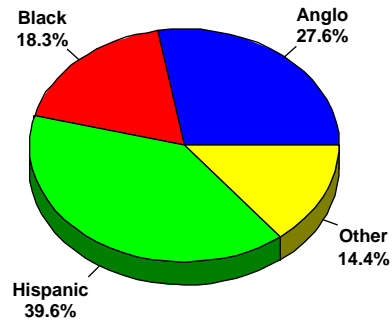
| Ethnic Category | Number | | Percent Change 1990-2000 | Proportion of Population | |
|----------------------|--------------------|--------------------|-----------------------------|--------------------------|--------------|
| | 1990 | 2000 | | 1990 | 2000 |
| Texas | | | | | |
| Anglo | 10,291,680 | 11,074,716 | 7.6 | 60.6 | 53.1 |
| Black | 1,976,360 | 2,421,653 | 22.5 | 11.6 | 11.6 |
| Hispanic | 4,339,905 | 6,669,666 | 53.7 | 25.6 | 32.0 |
| Other | 378,565 | 685,785 | 81.2 | 2.2 | 3.3 |
| Total | 16,986,510 | 20,851,820 | 22.8 | 100.0 | 100.0 |
| United States | | | | | |
| Anglo | 188,128,296 | 197,165,673 | 4.8 | 75.7 | 70.1 |
| Black | 29,216,293 | 35,195,894 | 20.5 | 11.7 | 12.5 |
| Hispanic | 22,354,059 | 35,305,818 | 57.9 | 9.0 | 12.5 |
| Other | 9,011,225 | 13,754,521 | 52.6 | 3.6 | 4.9 |
| Total | 248,709,873 | 281,421,906 | 13.2 | 100.0 | 100.0 |

United States Population by Race/Ethnicity in 2000 and Net Change Due to Each Racial/Ethnic Group 1990-2000

Percent of Population



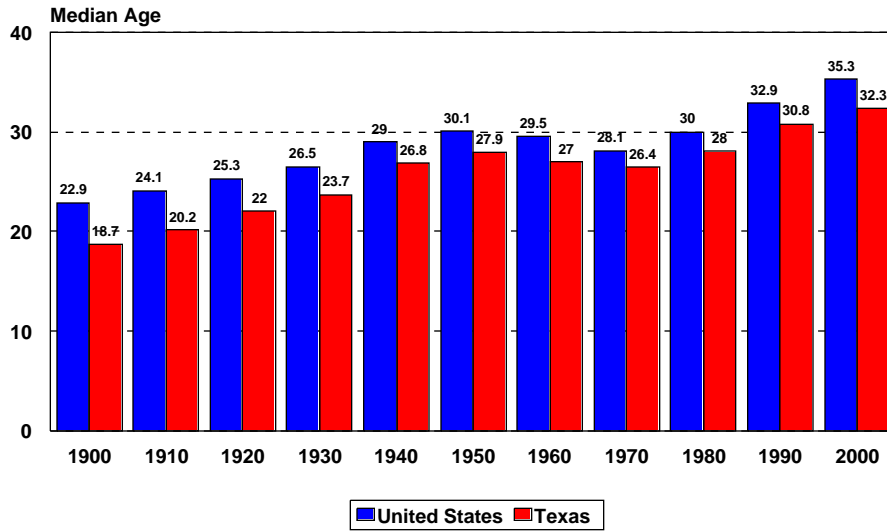
Net Change



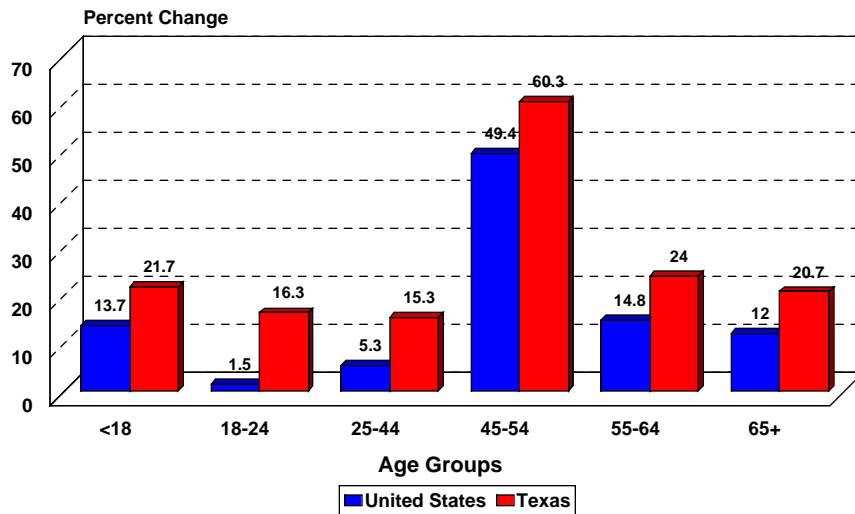
Major Changes in Population Composition (Characteristics)

- Age

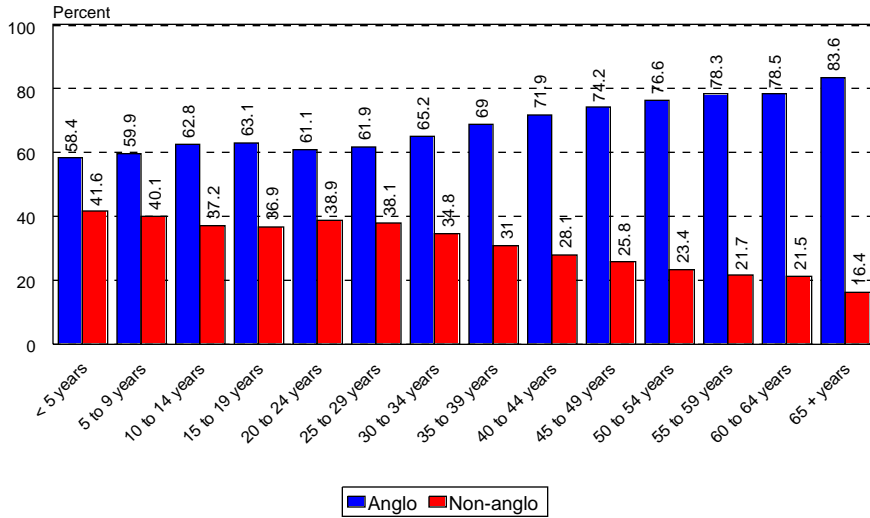
Median Age in the United States and Texas, 1900-2000



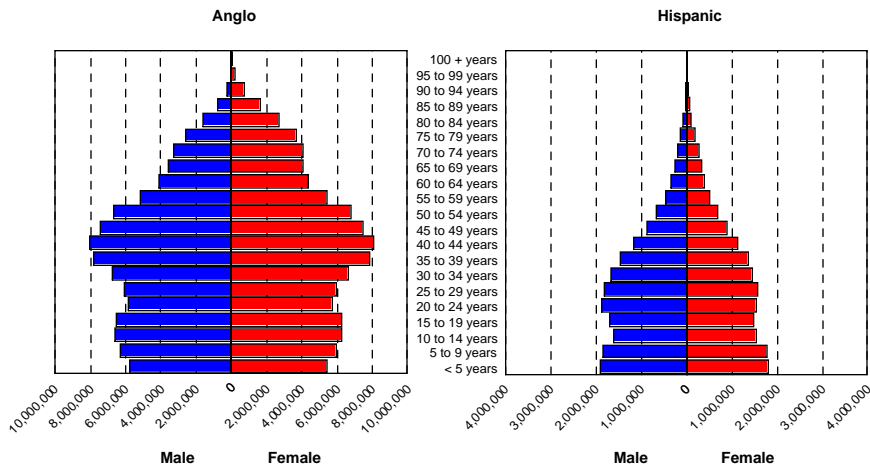
Percent Change in Population by Age Group in the United States and Texas, 1990-2000



Percent of United States Population By Age Group and Ethnicity, 2000

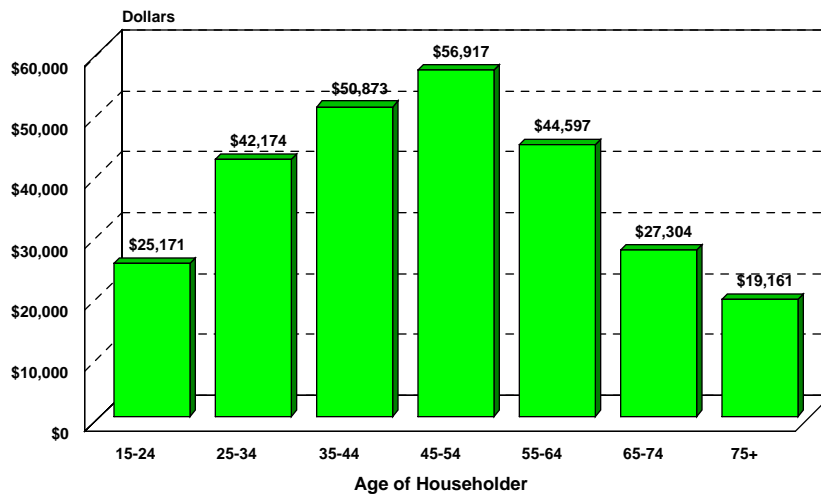


Population Pyramids for Anglo and Hispanic Ethnic Groups in the United States, 2000



POPULATION CHARACTERISTICS AND SOCIOECONOMIC CONDITIONS

Median Household Income in the United States by Age of Householder, 1999



Source: U.S. Census Bureau, Money Income in the United States: 1999, Current Population Report P60-209

**Median Household Income in the United States
by Race/Ethnicity, 1989 and 1999 with Percent
Change 1989 to 1999**

| Race/Ethnicity of Householder | Median Household Income | | Percent Change 1989-99 |
|----------------------------------|----------------------------|-----------|------------------------------|
| | 1989 (in 1999 dollars) | 1999 | |
| Total | \$ 39,009 | \$ 41,994 | 7.7 |
| Anglo | 41,106 | 45,367 | 10.4 |
| Black | 25,643 | 29,423 | 14.7 |
| Hispanic* | 31,351 | 33,676 | 7.4 |
| Asian | 48,030 | 51,908 | 8.1 |

*Hispanics can be of any race.

**Average (Mean) SAT Scores for College
Bound Seniors in the United States in 2001
by Selected Characteristics**

| Characteristic | SAT Score | |
|------------------------------------|----------------|--------------|
| | Mean Verbal | Mean Math |
| All Students (N = 1,276,320) | 506 | 514 |
| Race/Ethnicity: | | |
| American Indian | 481 | 479 |
| African American or Black | 433 | 426 |
| Hispanic: Mexican American | 451 | 458 |
| Puerto Rican | 457 | 451 |
| Other Hispanic | 460 | 465 |
| White | 529 | 531 |
| Asian American or Pacific Islander | 501 | 566 |
| Household Income: | | |
| < \$10,000 | 421 | 443 |
| \$10,000 - 20,000 | 442 | 456 |
| \$20,000 - 30,000 | 468 | 474 |
| \$30,000 - 40,000 | 487 | 489 |
| \$40,000 - 50,000 | 501 | 503 |
| \$50,000 - 60,000 | 509 | 512 |
| \$60,000 - 70,000 | 516 | 519 |
| \$70,000 - 80,000 | 522 | 527 |
| \$80,000 - 100,000 | 534 | 540 |
| > \$100,000 | 557 | 569 |

Selected Demographic Characteristics of Selected States

| Characteristic | United States | Arizona | California | Colorado | New Mexico | Texas |
|--------------------------------------|---------------|-----------|------------|-----------|------------|------------|
| Population, 1990 | 248,709,873 | 3,665,228 | 29,760,021 | 3,294,394 | 1,515,069 | 16,986,510 |
| Percent Population Change, 1980-90 | 9.8 | 34.8 | 25.7 | 14.0 | 16.3 | 19.4 |
| Population, 2000 | 281,421,906 | 5,130,632 | 33,871,648 | 4,301,261 | 1,819,046 | 20,851,820 |
| Percent Population Change, 1990-2000 | 13.2 | 40.0 | 13.8 | 30.6 | 20.1 | 22.8 |
| Population by Age, 2000 (%) | | | | | | |
| <15 | 21.4 | 22.4 | 23.0 | 21.3 | 23.0 | 23.5 |
| 15-19 | 7.2 | 7.2 | 7.2 | 7.1 | 8.0 | 7.8 |
| 20-24 | 6.7 | 7.1 | 7.0 | 7.1 | 6.7 | 7.4 |
| 25-34 | 14.2 | 14.5 | 15.4 | 15.4 | 12.9 | 15.2 |
| 35-64 | 38.1 | 35.8 | 36.8 | 39.4 | 37.7 | 36.2 |
| 65+ | 12.4 | 13.0 | 10.6 | 9.7 | 11.7 | 9.9 |
| Median Age | 35.3 | 34.2 | 33.3 | 34.3 | 34.6 | 32.3 |

Population and Population Change in Selected States 1990-2000 and 2000-2004

| | 1990 Population | 2000 Population | 2004 Population Estimate | Numerical Change | | Annualized Percent Change | |
|---------------|--------------------|--------------------|--------------------------------|---------------------|---------------|---------------------------------|---------------|
| | | | | 1990- 2000 | 2000- 2004 | 1990- 2000 | 2000- 2004 |
| United States | 248,790,925 | 281,421,906 | 293,655,404 | 32,630,981 | 12,233,498 | 1.3 | 1.0 |
| Arizona | 3,665,339 | 5,130,632 | 5,743,834 | 1,465,293 | 613,202 | 4.0 | 2.8 |
| California | 29,811,427 | 33,871,648 | 35,893,799 | 4,060,221 | 2,022,151 | 1.4 | 1.4 |
| Colorado | 3,294,473 | 4,301,261 | 4,601,403 | 1,006,788 | 300,142 | 3.1 | 1.6 |
| New Mexico | 1,515,069 | 1,819,046 | 1,903,289 | 303,977 | 84,243 | 2.0 | 1.1 |
| Texas | 16,986,335 | 20,851,820 | 22,490,022 | 3,865,485 | 1,638,202 | 2.3 | 1.8 |

Source: U.S. Census of Population and Housing 1990 and 2000 and U.S. Bureau of the Census Population Estimates for 2004.

Numerical Population Change by Components of Change in the United States and Selected States, 1990-2000 and 2000-2004

| | United States | Arizona | California | Colorado | New Mexico | Texas |
|-------------------------|---------------|-----------|------------|-----------|------------|-----------|
| 1990-2000 | | | | | | |
| Numerical Change | 32,630,981 | 1,465,293 | 4,060,221 | 1,006,788 | 303,977 | 3,865,485 |
| Natural Increase | 17,081,253 | 382,839 | 3,410,542 | 312,851 | 153,800 | 1,922,044 |
| Domestic Migration | 0 | 967,578 | -1,817,043 | 622,078 | 108,782 | 1,166,570 |
| International Migration | 8,116,734 | 114,876 | 2,466,722 | 71,859 | 41,395 | 776,871 |
| 2000-2004 | | | | | | |
| Numerical Change | 12,233,498 | 613,202 | 2,022,151 | 300,142 | 84,243 | 1,638,202 |
| Natural Increase | 6,901,163 | 193,305 | 1,260,527 | 164,359 | 57,808 | 930,519 |
| Domestic Migration | 0 | 278,722 | -430,806 | 41,163 | 3,168 | 149,679 |
| International Migration | 5,329,639 | 141,175 | 1,192,430 | 94,620 | 23,267 | 558,004 |

Percent of Population Change by Components of Change in the United States and Selected States, 1990-2000 and 2000-2004

| | United States | Arizona | California | Colorado | New Mexico | Texas |
|---------------------------------|---------------|-----------|------------|-----------|------------|-----------|
| 1990-2000 | | | | | | |
| Numerical Change | 32,630,981 | 1,465,293 | 4,060,221 | 1,006,788 | 303,977 | 3,865,485 |
| Percent Natural Increase | 75.1 | 26.2 | 84.0 | 31.1 | 50.6 | 49.7 |
| Percent Domestic Migration | 0.0 | 66.0 | -44.8 | 61.8 | 35.8 | 30.2 |
| Percent International Migration | 24.9 | 7.8 | 60.8 | 7.1 | 13.6 | 20.1 |
| 2000-2004 | | | | | | |
| Numerical Change | 12,233,498 | 613,202 | 2,022,151 | 300,142 | 84,243 | 1,638,202 |
| Percent Natural Increase | 56.4 | 31.5 | 62.3 | 54.8 | 68.6 | 56.8 |
| Percent Domestic Migration | 0.0 | 45.5 | -21.3 | 13.7 | 3.8 | 9.1 |
| Percent International Migration | 43.6 | 23.0 | 59.0 | 31.5 | 27.6 | 34.1 |

Race/Ethnicity Characteristics of Selected States

| Characteristic | United States | Arizona | California | Colorado | New Mexico | Texas |
|--|---------------|---------|------------|----------|------------|-------|
| Race/Ethnicity, 2000 | | | | | | |
| % Non-Hispanic White | 70.1 | 64.7 | 48.4 | 75.5 | 45.7 | 53.1 |
| % Black | 12.5 | 3.3 | 6.9 | 4.1 | 1.9 | 11.6 |
| % Hispanic | 12.5 | 25.3 | 32.4 | 17.1 | 42.1 | 32.0 |
| % Other | 4.9 | 6.7 | 12.3 | 3.3 | 10.3 | 3.3 |
| Percent change in Population by race/ethnicity, 1990-2000 | | | | | | |
| Non-Hispanic White | 4.8 | 26.5 | -3.7 | 22.2 | 8.8 | 7.6 |
| Black | 20.5 | 59.7 | 11.7 | 37.3 | 26.7 | 22.5 |
| Hispanic | 57.9 | 88.2 | 42.6 | 73.4 | 32.1 | 53.7 |
| Other | 52.6 | 40.5 | 41.5 | 69.5 | 29.9 | 81.2 |

Selected Income Characteristics of Selected States

| Characteristic | United States | Arizona | California | Colorado | New Mexico | Texas |
|---|---------------|-----------|------------|-----------|------------|-----------|
| Income, 1999 | | | | | | |
| Median household | 41,994 | 40,558 | 47,493 | 47,203 | 34,133 | 39,927 |
| Median family | 50,046 | 46,723 | 53,025 | 55,883 | 39,425 | 45,861 |
| Per capita | 21,587 | 20,275 | 22,711 | 24,049 | 17,261 | 19,617 |
| Real income, % change 1989-1999 | | | | | | |
| Median household | 7.7 | 13.5 | 2.2 | 20.7 | 9.2 | 13.9 |
| Median family | 9.5 | 11.9 | 0.7 | 19.8 | 10.0 | 12.0 |
| Per capita | 15.3 | 16.1 | 6.6 | 25.0 | 18.3 | 17.1 |
| Household income category, by number 1999 | | | | | | |
| Households | 105,539,122 | 1,901,625 | 11,512,020 | 1,659,308 | 678,032 | 7,397,294 |
| Less than \$10,000 | 10,067,027 | 163,221 | 967,089 | 114,658 | 84,527 | 767,505 |
| \$10,000 to \$14,999 | 6,657,228 | 120,770 | 648,780 | 82,584 | 56,773 | 491,154 |
| \$15,000 to \$24,999 | 13,536,965 | 264,392 | 1,318,246 | 185,997 | 107,287 | 1,004,123 |
| \$25,000 to \$34,999 | 13,519,242 | 265,645 | 1,315,085 | 208,982 | 97,447 | 996,141 |
| \$35,000 to \$49,999 | 17,446,272 | 332,857 | 1,745,961 | 281,889 | 115,315 | 1,219,358 |
| \$50,000 to \$74,999 | 20,540,604 | 365,024 | 2,202,873 | 351,663 | 111,913 | 1,359,437 |
| \$75,000 to \$99,999 | 10,799,245 | 184,026 | 1,326,569 | 197,339 | 53,079 | 705,684 |
| \$100,000 to \$149,999 | 8,147,826 | 131,068 | 1,192,618 | 150,572 | 34,045 | 536,018 |
| \$150,000 or more | 4,824,713 | 74,622 | 794,799 | 85,624 | 17,646 | 317,874 |
| Household income category, by percent 1999 | | | | | | |
| Households | 100.0 | 100.0 | 100.0 | 100.0 | 100.0 | 100.0 |
| Less than \$10,000 | 9.5 | 8.6 | 8.4 | 6.9 | 12.5 | 10.4 |
| \$10,000 to \$14,999 | 6.3 | 6.3 | 5.6 | 5.0 | 8.3 | 6.6 |
| \$15,000 to \$24,999 | 12.9 | 13.9 | 11.5 | 11.2 | 15.9 | 13.6 |
| \$25,000 to \$34,999 | 12.8 | 14.0 | 11.4 | 12.6 | 14.3 | 13.5 |
| \$35,000 to \$49,999 | 16.5 | 17.5 | 15.2 | 17.0 | 17.0 | 16.4 |
| \$50,000 to \$74,999 | 19.5 | 19.2 | 19.1 | 21.2 | 16.5 | 18.4 |
| \$75,000 to \$99,999 | 10.2 | 9.7 | 11.5 | 11.9 | 7.9 | 9.6 |
| \$100,000 to \$149,000 | 7.7 | 6.9 | 10.4 | 9.0 | 5.0 | 7.2 |
| \$150,000 or more | 4.6 | 3.9 | 6.9 | 5.2 | 2.6 | 4.3 |

Selected Educational Characteristics of Selected States

| Characteristic | United States | Arizona | California | Colorado | New Mexico | Texas |
|---|---------------|-----------|------------|-----------|------------|------------|
| Educational attainment, Number 2000 | | | | | | |
| Total population 25 years and over | 182,211,639 | 3,256,184 | 21,298,900 | 2,776,632 | 1,134,801 | 12,790,893 |
| Less than 9th grade | 13,755,477 | 254,696 | 2,446,324 | 134,348 | 104,985 | 1,465,420 |
| 9th to 12th grade, no diploma | 21,960,148 | 364,851 | 2,496,419 | 228,691 | 134,996 | 1,649,141 |
| High school graduate (includes equivalency) | 52,168,981 | 791,904 | 4,288,452 | 644,360 | 301,746 | 3,176,743 |
| Some college, no degree | 38,351,595 | 859,165 | 4,879,336 | 667,610 | 259,924 | 2,858,802 |
| Associate degree | 11,512,833 | 219,356 | 1,518,403 | 193,868 | 67,001 | 668,494 |
| Bachelor's degree | 28,317,792 | 493,419 | 3,640,157 | 599,028 | 154,372 | 1,996,250 |
| Graduate or professional degree | 16,144,813 | 272,793 | 2,029,809 | 308,727 | 111,777 | 976,043 |
| Educational attainment, Percent 2000 | | | | | | |
| Total population 25 years and over | 100.0 | 100.0 | 100.0 | 100.0 | 100.0 | 100.0 |
| Less than 9th grade | 7.5 | 7.8 | 11.5 | 4.8 | 9.3 | 11.5 |
| 9th to 12th grade, no diploma | 12.1 | 11.2 | 11.7 | 8.3 | 11.8 | 12.8 |
| High school graduate (includes equivalency) | 28.6 | 24.3 | 20.1 | 23.2 | 26.6 | 24.9 |
| Some college, no degree | 21.1 | 26.4 | 23.0 | 24.0 | 22.9 | 22.3 |
| Associate degree | 6.3 | 6.8 | 7.1 | 7.0 | 5.9 | 5.3 |
| Bachelor's degree | 15.5 | 15.1 | 17.1 | 21.6 | 13.7 | 15.6 |
| Graduate or professional degree | 8.9 | 8.4 | 9.5 | 11.1 | 9.8 | 7.6 |
| Educational attainment, percent change 1990-2000 | | | | | | |
| Total population 25 years and over | 14.7 | 41.5 | 13.9 | 31.8 | 23.0 | 24.1 |
| Less than 9th grade | -16.6 | 22.7 | 17.3 | 13.6 | -0.4 | 5.6 |
| 9th to 12th grade, no diploma | -3.9 | 28.7 | 5.6 | 9.0 | 8.3 | 11.1 |
| High school graduate (includes equivalency) | 9.5 | 31.7 | 2.9 | 15.4 | 13.9 | 20.3 |
| Some college, no degree | 28.8 | 47.0 | 15.5 | 31.9 | 34.8 | 31.7 |
| Associate degree | 17.6 | 39.3 | 2.3 | 32.4 | 44.1 | 25.8 |
| Bachelor's degree | 35.9 | 61.0 | 27.4 | 58.0 | 37.9 | 39.8 |
| Graduate or professional degree | 40.7 | 70.2 | 34.6 | 63.3 | 46.3 | 46.4 |

Selected Poverty Characteristics of Selected States

| Characteristic | United States | Arizona | California | Colorado | New Mexico | Texas |
|---|---------------|---------|------------|----------|------------|-----------|
| Poverty, 1999 | | | | | | |
| Families Below Poverty | 6,620,945 | 128,318 | 845,991 | 67,614 | 68,178 | 632,676 |
| Individuals Below Poverty | 33,899,812 | 698,669 | 4,706,130 | 388,952 | 328,933 | 3,117,609 |
| 65 and Older Below Poverty | 3,287,774 | 54,737 | 280,411 | 29,661 | 26,341 | 251,172 |
| Under 18 Below Poverty | 11,746,858 | 257,710 | 1,757,100 | 121,614 | 125,218 | 1,189,935 |
| Poverty, percent change 1989-1999 | | | | | | |
| Families Below Poverty | 2.1 | 18.1 | 26.1 | -8.3 | 4.8 | 2.4 |
| Individuals Below Poverty | 6.8 | 23.8 | 29.7 | 3.7 | 7.5 | 3.9 |
| 65 and Older Below Poverty | -13.0 | 9.7 | 22.7 | -13.4 | 1.9 | -15.3 |
| Under 18 Below Poverty | 2.8 | 21.6 | 27.3 | -6.1 | 2.4 | 2.6 |
| Poverty rate, 1989 | | | | | | |
| Families Below Poverty | 10.0 | 11.4 | 9.3 | 8.6 | 16.5 | 14.1 |
| Individuals Below Poverty | 13.1 | 15.7 | 12.5 | 11.7 | 20.6 | 18.1 |
| 65 and Older Below Poverty | 12.8 | 10.8 | 7.6 | 11.0 | 16.5 | 18.4 |
| Under 18 Below Poverty | 18.3 | 22.0 | 18.2 | 15.3 | 27.8 | 24.3 |
| Poverty rate, 1999 | | | | | | |
| Families Below Poverty | 9.2 | 9.9 | 10.6 | 6.2 | 14.5 | 12.0 |
| Individuals Below Poverty | 12.4 | 13.9 | 14.2 | 9.3 | 18.4 | 15.4 |
| 65 and Older Below Poverty | 9.9 | 8.4 | 8.1 | 7.4 | 12.8 | 12.8 |
| Under 18 Below Poverty | 16.6 | 19.3 | 19.5 | 11.3 | 25.0 | 20.5 |
| Poverty rate, percent change 1989-1999 | | | | | | |
| Families Below Poverty | -8.0 | -13.2 | 14.0 | -27.9 | -12.1 | -14.9 |
| Individuals Below Poverty | -5.3 | -11.5 | 13.6 | -20.5 | -10.7 | -14.9 |
| 65 and Older Below Poverty | -22.7 | -22.2 | 6.6 | -32.7 | -22.4 | -30.4 |
| Under 18 Below Poverty | -9.3 | -12.3 | 7.1 | -26.1 | -10.1 | -15.6 |

**Projected Population for Selected States
for Selected Periods , 2000-2040**

| State | Time Period | | | | | | Percent Change for Total Period | Annualized Percent Change |
|-------------------------|-------------|------------|------------|------------|------------|------------|---------------------------------|---------------------------|
| | 2000 Census | 2010 | 2020 | 2025 | 2030 | 2040 | | |
| Arizona ² | 5,130,632 | 6,145,108 | 7,363,604 | 7,993,039 | 8,621,114 | 9,863,578 | 92.2 | 2.3 |
| California ¹ | 33,871,648 | 39,246,767 | 43,851,741 | na | 48,110,671 | 51,538,596 | 52.2 | 1.3 |
| New Mexico ¹ | 1,819,046 | 2,112,986 | 2,383,116 | 2,507,548 | 2,626,553 | na | 44.4 | 1.5 |
| Texas ¹ | 20,851,820 | 25,409,530 | 30,942,177 | 34,081,466 | 37,518,699 | 45,388,036 | 117.7 | 2.9 |

Sources:

¹ Post-2000 population projections by the state (various state agencies)

² Pre-2000 population projections by the state (various state agencies)

na - not available

**Projections of the Percent Elderly in the Population
in Selected Years in Selected States, 2000-2040**

| State | Time Period | | | | | |
|-------------------------|-------------|------|------|------|------|------|
| | 2000 Census | 2010 | 2020 | 2025 | 2030 | 2040 |
| Arizona ² | 13.0 | 14.7 | 17.6 | 19.6 | 21.3 | 22.3 |
| California ¹ | 10.6 | 11.4 | 14.2 | na | 17.3 | 18.4 |
| New Mexico ³ | 11.7 | 12.0 | 15.2 | 16.9 | na | na |
| Texas ¹ | 9.9 | 10.1 | 12.4 | 13.9 | 15.1 | 16.4 |

Sources:

¹ Post-2000 population projections by the state (various state agencies)

² Pre-2000 population projections by the state (various state agencies)

³ Pre-2000 population projections by the U.S. Census Bureau

na - not available

Projections of the Percent of Population by Race/Ethnicity for Selected Years in Selected States, 2000-2040

| State | Time Period | | | | | | | | | | | |
|-------------------------|-------------|----------|-------|----------|-------|----------|-------|----------|-------|----------|-------|----------|
| | 2000 Census | | 2010 | | 2020 | | 2025 | | 2030 | | 2040 | |
| | White | NonWhite | White | NonWhite | White | NonWhite | White | NonWhite | White | NonWhite | White | NonWhite |
| Arizona ² | 63.8 | 36.2 | 63.7 | 36.3 | 59.6 | 40.4 | 57.5 | 42.5 | na | na | na | na |
| California ¹ | 46.7 | 53.3 | 39.2 | 60.8 | 33.7 | 66.3 | na | na | 29.5 | 70.5 | 26.1 | 73.9 |
| New Mexico ² | 44.7 | 55.3 | 45.7 | 54.3 | 41.7 | 58.3 | 39.7 | 60.3 | na | na | na | na |
| Texas ¹ | 52.4 | 47.6 | 45.6 | 54.4 | 38.5 | 61.5 | 35.1 | 64.9 | 32.0 | 68.0 | 26.0 | 74.0 |

Sources:
¹ Post-2000 population projections by the state (various state agencies)
² Pre-2000 population projections by the U.S. Census Bureau
na - not available

Projections of the Percent of Population by Race/Ethnicity for Selected Years in California and Texas, 2000-2040

| State / Period (July 1) | Anglo | Black | Hispanic | Other |
|-------------------------|-------|-------|----------|-------|
| California | | | | |
| 2000 | 47.1 | 6.5 | 32.6 | 13.8 |
| 2010 | 39.2 | 6.7 | 38.7 | 15.4 |
| 2020 | 33.7 | 6.7 | 43.0 | 16.6 |
| 2030 | 29.5 | 6.6 | 46.8 | 17.1 |
| 2040 | 26.1 | 6.5 | 50.4 | 17.0 |
| Texas | | | | |
| 2000 | 53.1 | 11.6 | 32.0 | 3.3 |
| 2010 | 45.6 | 11.1 | 38.9 | 4.4 |
| 2020 | 38.5 | 10.4 | 45.5 | 5.6 |
| 2030 | 32.0 | 9.4 | 51.8 | 6.8 |
| 2040 | 26.0 | 8.3 | 57.6 | 8.1 |

Sources: Post-2000 population projections by the state (various state agencies)

Selected Demographic Characteristics of the U.S.-Mexico Border Regions

| Characteristic | Arizona | | California | |
|--------------------------------------|------------|--------------|------------|--------------|
| | (Border) | (Non-Border) | (Border) | (Non-Border) |
| Population, 1990 | 901,075 | 2,764,153 | 2,607,319 | 27,152,702 |
| Percent Population Change, 1980-1990 | 23.7 | 38.9 | 33.4 | 25.0 |
| Population, 2000 | 1,159,908 | 3,970,724 | 2,956,194 | 30,915,454 |
| Percent Population Change, 1990-2000 | 28.7 | 43.7 | 13.4 | 13.9 |
| Population by Age, 1990 (%) | | | | |
| <15 | 21.5 | 22.7 | 21.9 | 23.1 |
| 15-19 | 7.5 | 7.1 | 7.2 | 7.2 |
| 20-24 | 7.3 | 7.0 | 8.1 | 6.9 |
| 25-34 | 13.2 | 14.9 | 15.7 | 15.4 |
| 35-64 | 36.1 | 35.7 | 36.0 | 36.8 |
| 65+ | 14.4 | 12.6 | 11.1 | 10.6 |
| Median Age | 35.4 | 33.9 | 33.1 | 33.3 |
| ----- | | | | |
| Characteristic | New Mexico | | Texas | |
| | (Border) | (Non-Border) | (Border) | (Non-Border) |
| Population, 1990 | 249,094 | 1,265,975 | 3,396,447 | 13,590,063 |
| Percent Population Change, 1980-1990 | 26.3 | 14.5 | 19.8 | 19.3 |
| Population, 2000 | 312,200 | 1,506,846 | 4,126,060 | 16,725,760 |
| Percent Population Change, 1990-2000 | 25.3 | 19.0 | 21.5 | 23.1 |
| Population by Age, 1990 (%) | | | | |
| <15 | 23.9 | 22.9 | 26.0 | 22.9 |
| 15-19 | 8.6 | 7.9 | 8.4 | 7.7 |
| 20-24 | 7.6 | 6.5 | 7.3 | 7.4 |
| 25-34 | 12.2 | 13.0 | 14.4 | 15.4 |
| 35-64 | 34.9 | 38.3 | 33.4 | 36.8 |
| 65+ | 12.8 | 11.4 | 10.5 | 9.8 |
| Median Age | 33.1 | 34.8 | 30.7 | 32.8 |

Race/Ethnicity Characteristics of the U.S.-Mexico Border Regions

| Characteristic | Arizona | | California | |
|--|------------|--------------|------------|--------------|
| | (Border) | (Non-Border) | (Border) | (Non-Border) |
| Race/Ethnicity, 2000 | | | | |
| % Anglo | 58.5 | 66.6 | 55.1 | 47.8 |
| % Black | 3.1 | 3.3 | 6.0 | 7.0 |
| % Hispanic | 34.1 | 22.7 | 28.9 | 32.7 |
| % Other | 4.3 | 7.4 | 10.0 | 12.5 |
| Percent Change in Population by Race/Ethnicity, 1990-2000 | | | | |
| Anglo | 16.7 | 29.3 | -2.2 | -3.9 |
| Black | 34.6 | 68.4 | 16.0 | 11.3 |
| Hispanic | 53.1 | 109.3 | 46.5 | 42.3 |
| Other | 42.8 | 40.1 | 43.1 | 41.4 |
| ----- | | | | |
| Characteristic | New Mexico | | Texas | |
| | (Border) | (Non-Border) | (Border) | (Non-Border) |
| Race/Ethnicity, 2000 | | | | |
| % Anglo | 42.0 | 46.4 | 26.0 | 59.8 |
| % Black | 1.8 | 2.0 | 3.5 | 13.6 |
| % Hispanic | 53.5 | 39.7 | 69.1 | 22.8 |
| % Other | 2.7 | 11.9 | 1.4 | 3.8 |
| Percent Change in Population by Race/Ethnicity, 1990-2000 | | | | |
| Anglo | 8.2 | 8.9 | 0.3 | 8.5 |
| Black | 11.4 | 30.1 | 21.7 | 22.6 |
| Hispanic | 42.9 | 29.4 | 31.4 | 75.9 |
| Other | 38.9 | 29.5 | 50.4 | 84.6 |

Selected Income Characteristics of the U.S.-Mexico Border Regions

| Characteristic | Arizona | | California | | New Mexico | | Texas | |
|---|----------|--------------|------------|--------------|------------|--------------|-----------|--------------|
| | (Border) | (Non-Border) | (Border) | (Non-Border) | (Border) | (Non-Border) | (Border) | (Non-Border) |
| Income, 1999 | | | | | | | | |
| Median Household | 35,658 | 42,799 | 46,942 | 48,051 | 29,017 | 35,490 | 32,400 | 42,300 |
| Median Family | 42,250 | 48,503 | 53,343 | 53,999 | 33,243 | 41,395 | 35,233 | 48,909 |
| Per Capita | 18,497 | 20,794 | 22,460 | 22,735 | 13,918 | 17,954 | 14,485 | 20,884 |
| Real Income, % Change 1989-1999 | | | | | | | | |
| Median Household | 10.6 | 15.0 | 4.8 | 3.1 | 5.5 | 10.5 | 13.2 | 15.5 |
| Median Family | 9.8 | 12.6 | 5.2 | 2.3 | 7.0 | 11.8 | 11.5 | 13.2 |
| Per Capita | 14.5 | 16.2 | 8.7 | 6.5 | 13.2 | 19.3 | 16.4 | 17.2 |
| Household Income Category, By Number 1999 | | | | | | | | |
| Households | 442,118 | 1,459,507 | 1,034,925 | 10,477,095 | 112,243 | 565,789 | 1,324,358 | 6,072,936 |
| Less than \$10,000 | 46,514 | 116,707 | 77,117 | 889,972 | 17,052 | 67,475 | 187,082 | 580,423 |
| \$10,000 to \$14,999 | 33,656 | 87,114 | 56,425 | 592,355 | 11,854 | 44,919 | 115,930 | 375,224 |
| \$15,000 to \$24,999 | 70,826 | 193,566 | 124,517 | 1,193,729 | 20,379 | 86,908 | 217,812 | 786,311 |
| \$25,000 to \$34,999 | 66,721 | 198,924 | 127,352 | 1,187,733 | 17,018 | 80,429 | 191,033 | 805,108 |
| \$35,000 to \$49,999 | 76,200 | 256,657 | 165,860 | 1,580,101 | 18,545 | 96,770 | 213,714 | 1,005,644 |
| \$50,000 to \$74,999 | 76,611 | 288,413 | 206,827 | 1,996,046 | 16,083 | 95,830 | 210,560 | 1,148,877 |
| \$75,000 to \$99,999 | 35,242 | 148,784 | 117,602 | 1,208,967 | 6,403 | 46,676 | 92,709 | 612,975 |
| \$100,000 to \$149,999 | 23,044 | 108,024 | 99,911 | 1,092,707 | 3,446 | 30,599 | 62,405 | 473,613 |
| \$150,000 or more | 13,304 | 61,318 | 59,314 | 735,485 | 1,463 | 16,183 | 33,113 | 284,761 |
| Household Income Category, By Percent 1999 | | | | | | | | |
| Households | 100.0 | 100.0 | 100.0 | 100.0 | 100.0 | 100.0 | 100.0 | 100.0 |
| Less than \$10,000 | 10.5 | 8.0 | 7.5 | 8.5 | 15.2 | 11.9 | 14.1 | 9.6 |
| \$10,000 to \$14,999 | 7.6 | 6.0 | 5.4 | 5.6 | 10.6 | 8.0 | 8.8 | 6.1 |
| \$15,000 to \$24,999 | 16.1 | 13.2 | 12.0 | 11.4 | 18.1 | 15.3 | 16.4 | 13.0 |
| \$25,000 to \$34,999 | 15.0 | 13.7 | 12.3 | 11.4 | 15.2 | 14.2 | 14.5 | 13.2 |
| \$35,000 to \$49,999 | 17.3 | 17.5 | 16.1 | 15.1 | 16.5 | 17.1 | 16.1 | 16.6 |
| \$50,000 to \$74,999 | 17.3 | 19.8 | 20.0 | 19.0 | 14.3 | 17.0 | 15.9 | 18.9 |
| \$75,000 to \$99,999 | 8.0 | 10.2 | 11.3 | 11.6 | 5.7 | 8.2 | 7.0 | 10.1 |
| \$100,000 to \$149,999 | 5.2 | 7.4 | 9.7 | 10.4 | 3.1 | 5.4 | 4.7 | 7.8 |
| \$150,000 or more | 3.0 | 4.2 | 5.7 | 7.0 | 1.3 | 2.9 | 2.5 | 4.7 |

Selected Poverty Characteristics of the U.S.-Mexico Border Regions

| Characteristic | Arizona | | California | | New Mexico | | Texas | |
|---|----------|--------------|------------|--------------|------------|--------------|----------|--------------|
| | (Border) | (Non-Border) | (Border) | (Non-Border) | (Border) | (Non-Border) | (Border) | (Non-Border) |
| Poverty, 1999 | | | | | | | | |
| Families Below Poverty | 35,173 | 93,145 | 65,392 | 780,599 | 15,272 | 52,906 | 202,057 | 430,619 |
| Individuals Below Poverty | 179,576 | 519,093 | 368,080 | 4,338,050 | 72,893 | 256,040 | 964,695 | 2,152,914 |
| 65 and Older Below Poverty | 14,573 | 40,164 | 22,474 | 257,937 | 5,026 | 21,315 | 76,099 | 175,073 |
| Under 18 Below Poverty | 65,246 | 192,464 | 132,473 | 1,624,627 | 30,008 | 95,210 | 411,859 | 778,076 |
| Poverty, Percent Change 1989-1999 | | | | | | | | |
| Families Below Poverty | 15.3 | 19.2 | 19.4 | 26.7 | 26.2 | -0.1 | 3.4 | 1.9 |
| Individuals Below Poverty | 13.0 | 28.0 | 24.0 | 30.2 | 26.7 | 3.1 | 2.8 | 4.4 |
| 65 and Older Below Poverty | 9.9 | 9.6 | 25.3 | 22.5 | 20.9 | -1.7 | 2.0 | -21.2 |
| Under 18 Below Poverty | 12.9 | 24.8 | 22.3 | 27.7 | 26.8 | -3.4 | 0.7 | 3.6 |
| Poverty Rate, 1989 | | | | | | | | |
| Families Below Poverty | 13.2 | 10.9 | 8.7 | 9.4 | 18.7 | 16.0 | 23.3 | 11.9 |
| Individuals Below Poverty | 18.2 | 15.0 | 11.9 | 12.6 | 23.8 | 20.0 | 28.2 | 15.6 |
| 65 and Older Below Poverty | 11.2 | 10.6 | 6.6 | 7.8 | 15.5 | 16.7 | 23.1 | 17.2 |
| Under 18 Below Poverty | 25.1 | 21.1 | 17.1 | 18.4 | 32.0 | 26.9 | 38.1 | 20.3 |
| Poverty Rate, 1999 | | | | | | | | |
| Families Below Poverty | 11.9 | 9.3 | 9.3 | 10.7 | 19.0 | 13.6 | 19.9 | 10.1 |
| Individuals Below Poverty | 15.9 | 13.3 | 12.9 | 14.3 | 24.0 | 17.3 | 23.9 | 13.3 |
| 65 and Older Below Poverty | 8.8 | 8.2 | 7.1 | 8.2 | 12.9 | 12.8 | 18.1 | 11.3 |
| Under 18 Below Poverty | 22.3 | 18.4 | 17.6 | 19.6 | 33.7 | 23.2 | 32.5 | 17.2 |
| Poverty Rate, Percent Change 1989-1999 | | | | | | | | |
| Families Below Poverty | -9.8 | -14.7 | 6.9 | 13.8 | 1.6 | -15.0 | -14.6 | -15.1 |
| Individuals Below Poverty | -12.6 | -11.3 | 8.4 | 13.5 | 0.8 | -13.5 | -15.2 | -14.7 |
| 65 and Older Below Poverty | -21.4 | -22.6 | 7.6 | 5.1 | -16.8 | -23.4 | -21.6 | -34.3 |
| Under 18 Below Poverty | -11.2 | -12.8 | 2.9 | 6.5 | 5.3 | -13.8 | -14.7 | -15.3 |

Selected Educational Characteristics of the U.S.-Mexico Border Regions

| Characteristic | Arizona | | California | | New Mexico | | Texas | |
|---|----------|--------------|------------|--------------|------------|--------------|-----------|--------------|
| | (Border) | (Non-Border) | (Border) | (Non-Border) | (Border) | (Non-Border) | (Border) | (Non-Border) |
| Education Attainment, Number 2000 | | | | | | | | |
| Total population 25 years and over | 742,099 | 2,514,085 | 1,856,959 | 19,441,941 | 187,583 | 947,218 | 2,408,683 | 10,382,210 |
| Less than 9th grade | 63,375 | 191,321 | 160,660 | 2,285,664 | 28,019 | 76,966 | 479,428 | 985,592 |
| 9th to 12th grade, no diploma | 84,898 | 279,953 | 182,447 | 2,313,972 | 23,142 | 111,854 | 329,248 | 1,319,893 |
| High school graduate (includes equivalency) | 176,271 | 615,633 | 370,418 | 3,918,034 | 48,575 | 253,171 | 562,230 | 2,614,513 |
| Some college, no degree | 193,312 | 665,853 | 471,500 | 4,407,836 | 41,362 | 218,562 | 498,335 | 2,360,467 |
| Associate degree | 48,917 | 170,439 | 139,782 | 1,378,621 | 10,858 | 56,143 | 117,465 | 551,029 |
| Bachelor degree | 105,167 | 388,252 | 336,544 | 3,303,613 | 20,843 | 133,529 | 270,772 | 1,725,478 |
| Graduate or professional degree | 70,159 | 202,634 | 195,608 | 1,834,201 | 14,784 | 96,993 | 151,205 | 824,838 |
| Education Attainment, Percent 2000 | | | | | | | | |
| Total population 25 years and over | 100.0 | 100.0 | 100.0 | 100.0 | 100.0 | 100.0 | 100.0 | 100.0 |
| Less than 9th grade | 8.5 | 7.6 | 8.7 | 11.8 | 14.9 | 8.1 | 19.9 | 9.5 |
| 9th to 12th grade, no diploma | 11.5 | 11.1 | 9.8 | 11.9 | 12.4 | 11.8 | 13.7 | 12.7 |
| High school graduate (includes equivalency) | 23.7 | 24.5 | 19.9 | 20.1 | 25.9 | 26.8 | 23.3 | 25.2 |
| Some college, no degree | 26.1 | 26.5 | 25.4 | 22.7 | 22.0 | 23.0 | 20.7 | 22.7 |
| Associate degree | 6.6 | 6.8 | 7.5 | 7.1 | 5.8 | 6.0 | 4.9 | 5.3 |
| Bachelor degree | 14.1 | 15.4 | 18.2 | 17.0 | 11.1 | 14.1 | 11.2 | 16.7 |
| Graduate or professional degree | 9.5 | 8.1 | 10.5 | 9.4 | 7.9 | 10.2 | 6.3 | 7.9 |
| Education Attainment, Percent Change 1990-2000 | | | | | | | | |
| Total population 25 years and over | 31.4 | 44.8 | 14.7 | 13.9 | 29.4 | 21.8 | 24.6 | 23.9 |
| Less than 9th grade | 5.9 | 29.6 | 18.2 | 17.2 | 22.1 | -6.6 | 3.6 | 6.6 |
| 9th to 12th grade, no diploma | 26.8 | 29.2 | 4.7 | 5.6 | 26.2 | 5.3 | 27.5 | 7.6 |
| High school graduate (includes equivalency) | 23.2 | 34.3 | 0.9 | 3.1 | 20.3 | 12.7 | 25.9 | 19.2 |
| Some college, no degree | 39.9 | 49.3 | 15.3 | 15.5 | 36.5 | 34.5 | 34.7 | 31.0 |
| Associate degree | 27.0 | 43.3 | 5.4 | 2.0 | 56.8 | 41.9 | 26.3 | 25.7 |
| Bachelor degree | 44.3 | 66.1 | 29.3 | 27.2 | 31.3 | 39.0 | 35.7 | 40.5 |
| Graduate or professional degree | 54.2 | 76.5 | 40.1 | 34.0 | 44.7 | 46.6 | 46.2 | 46.4 |

Total Population in 2000 and Projections of the Total Population in Border/Non-Border Regions in Arizona from 2010 to 2030

| Year | Total |
|-------------------|------------------|
| Border | |
| 2000 | 1,159,908 |
| 2010 | 1,485,780 |
| 2020 | 1,774,648 |
| 2030 | 2,017,336 |
| Non-Border | |
| 2000 | 3,970,724 |
| 2010 | 5,514,030 |
| 2020 | 7,004,919 |
| 2030 | 8,330,207 |

**Percent Change for Selected
Time Periods for Projected
Population in Border/Non-
Border Regions in Arizona by
Race/Ethnicity**

| Year | Total |
|-------------------|--------------|
| Border | |
| 2000-2010 | 28.1 |
| 2010-2020 | 19.4 |
| 2020-2030 | 13.7 |
| 2000-2030 | 73.9 |
| Non-Border | |
| 2000-2010 | 38.9 |
| 2010-2020 | 27.0 |
| 2020-2030 | 18.9 |
| 2000-2030 | 109.8 |

**Percent Population by Age Group
in 2000 and Projected Population
by Age Group in Border/Non-
Border Regions in Arizona from
2010 to 2030**

| Age Group | Total |
|---------------|-------|
| Border | |
| 2000 | |
| <20 | 28.9 |
| 20-24 | 7.3 |
| 25-44 | 27.7 |
| 45-64 | 21.7 |
| 65+ | 14.4 |
| 2010 | |
| <20 | 26.3 |
| 20-24 | 7.2 |
| 25-44 | 25.5 |
| 45-64 | 24.6 |
| 65+ | 16.4 |
| 2020 | |
| <20 | 25.7 |
| 20-24 | 6.2 |
| 25-44 | 25.0 |
| 45-64 | 22.9 |
| 65+ | 20.2 |
| 2030 | |
| <20 | 25.1 |
| 20-24 | 6.4 |
| 25-44 | 23.5 |
| 45-64 | 21.2 |
| 65+ | 23.8 |

| Continued | |
|-------------------|-------|
| Age | |
| Group | Total |
| Non-Border | |
| 2000 | |
| <20 | 29.8 |
| 20-24 | 7.0 |
| 25-44 | 30.0 |
| 45-64 | 20.6 |
| 65+ | 12.6 |
| 2010 | |
| <20 | 28.3 |
| 20-24 | 6.8 |
| 25-44 | 27.5 |
| 45-64 | 23.6 |
| 65+ | 13.8 |
| 2020 | |
| <20 | 27.7 |
| 20-24 | 6.1 |
| 25-44 | 26.4 |
| 45-64 | 22.9 |
| 65+ | 16.9 |
| 2030 | |
| <20 | 27.1 |
| 20-24 | 6.3 |
| 25-44 | 25.0 |
| 45-64 | 21.6 |
| 65+ | 20.0 |

Population by Race/Ethnicity in 2000 and Projections of the Population by Race/Ethnicity in Border/Non-Border Regions in California from 2010 to 2030

| Year | Anglo | Black | Hispanic | Other | Total |
|-------------------|------------|-----------|------------|-----------|------------|
| Border | | | | | |
| 2000 | 1,589,772 | 163,909 | 873,886 | 348,656 | 2,976,223 |
| 2010 | 1,533,613 | 189,348 | 1,236,257 | 477,934 | 3,437,152 |
| 2020 | 1,497,073 | 213,342 | 1,538,820 | 598,723 | 3,847,958 |
| 2030 | 1,440,541 | 233,732 | 1,876,778 | 709,562 | 4,260,613 |
| Non-Border | | | | | |
| 2000 | 14,458,217 | 2,058,907 | 10,209,099 | 4,340,752 | 31,066,975 |
| 2010 | 13,844,335 | 2,439,623 | 13,945,337 | 5,580,320 | 35,809,615 |
| 2020 | 13,260,073 | 2,722,587 | 17,338,770 | 6,682,353 | 40,003,783 |
| 2030 | 12,741,559 | 2,958,930 | 20,643,851 | 7,505,718 | 43,850,058 |

**Percent Change for Selected Time Periods for Projected
Population in Border/Non-Border Regions in California
by Race/Ethnicity**

| Year | Anglo | Black | Hispanic | Other | Total |
|-------------------|-------|-------|----------|-------|-------|
| Border | | | | | |
| 2000-2010 | -3.5 | 15.5 | 41.5 | 37.1 | 15.5 |
| 2010-2020 | -2.4 | 12.7 | 24.5 | 25.3 | 12.0 |
| 2020-2030 | -3.8 | 9.6 | 22.0 | 18.5 | 10.7 |
| 2000-2030 | -9.4 | 42.6 | 114.8 | 103.5 | 43.2 |
| Non-Border | | | | | |
| 2000-2010 | -4.2 | 18.5 | 36.6 | 28.6 | 15.3 |
| 2010-2020 | -4.2 | 11.6 | 24.3 | 19.7 | 11.7 |
| 2020-2030 | -3.9 | 8.7 | 19.1 | 12.3 | 9.6 |
| 2000-2030 | -11.9 | 43.7 | 102.2 | 72.9 | 41.1 |

**Percent of Population by Race/Ethnicity in 2000 and Projections
of the Population by Race/Ethnicity in Border/Non-Border
Regions in California from 2010 to 2030**

| Year | Anglo | Black | Hispanic | Other |
|-------------------|-------|-------|----------|-------|
| Border | | | | |
| 2000 | 53.4 | 5.5 | 29.4 | 11.7 |
| 2010 | 44.6 | 5.5 | 36.0 | 13.9 |
| 2020 | 38.9 | 5.5 | 40.0 | 15.6 |
| 2030 | 33.8 | 5.5 | 44.0 | 16.7 |
| Non-Border | | | | |
| 2000 | 46.5 | 6.6 | 32.9 | 14.0 |
| 2010 | 38.7 | 6.8 | 38.9 | 15.6 |
| 2020 | 33.2 | 6.8 | 43.3 | 16.7 |
| 2030 | 29.1 | 6.7 | 47.1 | 17.1 |

**Percent Population by Age Group and Race/Ethnicity in 2000
and Projected Population by Age Group and Race/Ethnicity in
Border/Non-Border Regions in California from 2010 to 2030**

| Age Group | Anglo | Black | Hispanic | Other | Total |
|---------------|-------|-------|----------|-------|-------|
| Border | | | | | |
| 2000 | | | | | |
| <20 | 21.8 | 33.8 | 39.4 | 31.6 | 28.8 |
| 20-24 | 7.1 | 9.3 | 10.2 | 8.9 | 8.3 |
| 25-44 | 31.0 | 35.2 | 32.9 | 32.7 | 32.0 |
| 45-64 | 24.3 | 16.2 | 12.6 | 19.0 | 19.8 |
| 65+ | 15.8 | 5.5 | 4.9 | 7.8 | 11.1 |
| 2010 | | | | | |
| <20 | 20.2 | 30.4 | 31.0 | 25.8 | 25.4 |
| 20-24 | 6.4 | 9.9 | 9.5 | 7.8 | 7.9 |
| 25-44 | 26.6 | 29.5 | 37.6 | 32.7 | 31.6 |
| 45-64 | 30.8 | 23.6 | 16.7 | 23.6 | 24.3 |
| 65+ | 16.0 | 6.6 | 5.2 | 10.1 | 10.8 |
| 2020 | | | | | |
| <20 | 20.1 | 27.6 | 31.2 | 22.7 | 25.4 |
| 20-24 | 5.7 | 8.9 | 5.6 | 6.7 | 5.9 |
| 25-44 | 24.3 | 29.2 | 34.7 | 31.5 | 29.9 |
| 45-64 | 29.4 | 25.3 | 21.6 | 25.5 | 25.5 |
| 65+ | 20.5 | 9.0 | 6.9 | 13.6 | 13.3 |
| 2030 | | | | | |
| <20 | 19.3 | 27.4 | 28.1 | 21.1 | 24.0 |
| 20-24 | 6.2 | 8.1 | 8.2 | 6.0 | 7.1 |
| 25-44 | 21.9 | 29.0 | 28.6 | 28.7 | 26.3 |
| 45-64 | 27.3 | 22.4 | 25.4 | 27.0 | 26.2 |
| 65+ | 25.3 | 13.1 | 9.7 | 17.2 | 16.4 |

Continued

| Age Group | Anglo | Black | Hispanic | Other | Total |
|-------------------|-------|-------|----------|-------|-------|
| Non-Border | | | | | |
| 2000 | | | | | |
| <20 | 22.8 | 32.9 | 40.5 | 29.8 | 30.3 |
| 20-24 | 5.1 | 6.7 | 9.3 | 7.4 | 6.9 |
| 25-44 | 30.0 | 31.9 | 33.0 | 32.8 | 31.5 |
| 45-64 | 26.2 | 20.0 | 12.9 | 21.1 | 20.7 |
| 65+ | 15.9 | 8.5 | 4.3 | 8.9 | 10.6 |
| 2010 | | | | | |
| <20 | 20.4 | 29.6 | 36.7 | 25.8 | 28.2 |
| 20-24 | 6.2 | 8.8 | 8.5 | 7.4 | 7.5 |
| 25-44 | 23.2 | 27.2 | 31.9 | 29.4 | 27.8 |
| 45-64 | 32.3 | 24.8 | 17.6 | 25.9 | 25.1 |
| 65+ | 17.9 | 9.6 | 5.3 | 11.5 | 11.4 |
| 2020 | | | | | |
| <20 | 19.7 | 27.6 | 34.4 | 23.0 | 27.2 |
| 20-24 | 5.1 | 7.3 | 7.7 | 6.5 | 6.6 |
| 25-44 | 22.4 | 29.1 | 29.7 | 28.1 | 27.0 |
| 45-64 | 29.5 | 24.2 | 21.0 | 26.8 | 25.0 |
| 65+ | 23.3 | 11.8 | 7.2 | 15.6 | 14.2 |
| 2030 | | | | | |
| <20 | 19.4 | 27.4 | 33.9 | 21.6 | 27.1 |
| 20-24 | 5.6 | 7.1 | 7.4 | 5.8 | 6.6 |
| 25-44 | 23.0 | 29.0 | 27.6 | 26.6 | 26.2 |
| 45-64 | 23.9 | 21.8 | 20.9 | 26.1 | 22.8 |
| 65+ | 28.1 | 14.7 | 10.2 | 19.9 | 17.3 |

Percent of Net Change in the Population in Border/Non-Border Regions in California from 2000-2030 Due to Each Race/Ethnicity Group

| Race/ Ethnicity | Number | Percent |
|----------------------------|-------------------|----------------|
| Border | | |
| Anglo | -149,231 | -11.6 |
| Black | 69,823 | 5.4 |
| Hispanic | 1,002,892 | 78.1 |
| Other | 360,906 | 28.1 |
| Total | 1,284,390 | 100.0 |
| Non-Border | | |
| Anglo | -1,716,658 | -13.4 |
| Black | 900,023 | 7.0 |
| Hispanic | 10,434,752 | 81.6 |
| Other | 3,164,966 | 24.8 |
| Total | 12,783,083 | 100.0 |

Total Population in 2000 and Projections of the Total Population in Border/Non-Border Regions in New Mexico from 2010 to 2030

| Year | Total |
|-------------------|------------------|
| Border | |
| 2000 | 313,633 |
| 2010 | 374,038 |
| 2020 | 426,444 |
| 2030 | 472,124 |
| Non-Border | |
| 2000 | 1,512,647 |
| 2010 | 1,738,948 |
| 2020 | 1,956,672 |
| 2030 | 2,154,429 |

**Percent Change for Selected
Time Periods for Projected
Population in New Mexico
Border/Non-Border Regions**

| Time | Total |
|-------------------|--------------|
| Border | |
| 2000-2010 | 19.3 |
| 2010-2020 | 14.0 |
| 2020-2030 | 10.7 |
| 2000-2030 | 50.5 |
| Non-Border | |
| 2000-2010 | 15.0 |
| 2010-2020 | 12.5 |
| 2020-2030 | 10.1 |
| 2000-2030 | 42.4 |

**Population by Race/Ethnicity in 2000 and Projections of the
Population by Race/Ethnicity in Border/Non-Border Regions in
Texas from 2010 to 2030**

| Year | Anglo | Black | Hispanic | Other | Total |
|---|--------------|--------------|-----------------|--------------|--------------|
| Assuming Rates of Net Migration Equal to 1990-2000 | | | | | |
| Border | | | | | |
| 2000 | 1,071,682 | 145,867 | 2,851,286 | 57,225 | 4,126,060 |
| 2010 | 1,024,886 | 166,555 | 3,797,915 | 100,353 | 5,089,709 |
| 2020 | 947,730 | 185,399 | 4,831,370 | 163,672 | 6,128,171 |
| 2030 | 840,100 | 196,106 | 5,853,068 | 256,722 | 7,145,996 |
| Non-Border | | | | | |
| 2000 | 10,003,034 | 2,275,786 | 3,818,380 | 628,560 | 16,725,760 |
| 2010 | 10,715,130 | 2,721,894 | 6,454,304 | 1,077,556 | 20,968,884 |
| 2020 | 11,279,825 | 3,176,303 | 10,395,001 | 1,757,385 | 26,608,514 |
| 2030 | 11,602,004 | 3,587,551 | 16,018,314 | 2,763,725 | 33,971,594 |

**Percent Change for Selected Time Periods for
Projected Population in Border/Non-Border Regions
in Texas by Race/Ethnicity**

| <u>Year</u> | <u>Anglo</u> | <u>Black</u> | <u>Hispanic</u> | <u>Other</u> | <u>Total</u> |
|--|--------------|--------------|-----------------|--------------|--------------|
| <u>Assuming Rates of Net Migration Equal to 1990-2000</u> | | | | | |
| Border | | | | | |
| 2000-2010 | -4.4 | 14.2 | 33.2 | 75.4 | 23.4 |
| 2010-2020 | -7.5 | 11.3 | 27.2 | 63.1 | 20.4 |
| 2020-2030 | -11.4 | 5.8 | 21.1 | 56.9 | 16.6 |
| 2000-2030 | -21.6 | 34.4 | 105.3 | 348.6 | 73.2 |
| Non-Border | | | | | |
| 2000-2010 | 7.1 | 19.6 | 69.0 | 71.4 | 25.4 |
| 2010-2020 | 5.3 | 16.7 | 61.1 | 63.1 | 26.9 |
| 2020-2030 | 2.9 | 12.9 | 54.1 | 57.3 | 27.7 |
| 2000-2030 | 16.0 | 57.6 | 319.5 | 339.7 | 103.1 |

**Population by Race/Ethnicity in 2000 and Projections of the Population by
Race/Ethnicity in Border/Non-Border Regions in Texas from 2010 to 2030**

| <u>Year</u> | <u>Anglo</u> | <u>Black</u> | <u>Hispanic</u> | <u>Other</u> |
|--|--------------|--------------|-----------------|--------------|
| <u>Assuming Rates of Net Migration Equal to 1990-2000</u> | | | | |
| Border | | | | |
| 2000 | 26.0 | 3.5 | 69.1 | 1.4 |
| 2010 | 20.1 | 3.3 | 74.6 | 2.0 |
| 2020 | 15.5 | 3.0 | 78.8 | 2.7 |
| 2030 | 11.8 | 2.7 | 81.9 | 3.6 |
| Non-Border | | | | |
| 2000 | 59.8 | 13.6 | 22.8 | 3.8 |
| 2010 | 51.1 | 13.0 | 30.8 | 5.1 |
| 2020 | 42.4 | 11.9 | 39.1 | 6.6 |
| 2030 | 34.1 | 10.6 | 47.2 | 8.1 |

**Percent Population by Age Group and Race/Ethnicity in 2000
and Projected Population by Age Group and Race/Ethnicity in
Border/Non-Border Regions in Texas from 2010 to 2030**

| Age Group | Anglo | Black | Hispanic | Other | Total |
|--|-------|-------|----------|-------|-------|
| <u>Assuming Net Migration Equal to 1990-2000</u> | | | | | |
| Border | | | | | |
| 2000 | | | | | |
| <20 | 23.4 | 34.3 | 38.7 | 28.1 | 34.4 |
| 20-24 | 5.4 | 8.2 | 8.0 | 7.5 | 7.3 |
| 25-44 | 27.5 | 31.6 | 29.0 | 35.5 | 28.8 |
| 45-64 | 25.2 | 17.6 | 16.6 | 22.1 | 19.0 |
| 65+ | 18.5 | 8.3 | 7.7 | 6.8 | 10.5 |
| 2010 | | | | | |
| <20 | 21.7 | 30.0 | 35.3 | 24.2 | 32.1 |
| 20-24 | 6.1 | 9.8 | 8.8 | 7.7 | 8.3 |
| 25-44 | 23.0 | 28.4 | 28.8 | 32.8 | 27.7 |
| 45-64 | 28.9 | 23.1 | 19.1 | 26.3 | 21.4 |
| 65+ | 20.3 | 8.7 | 8.0 | 9.0 | 10.5 |
| 2020 | | | | | |
| <20 | 21.4 | 26.5 | 32.7 | 21.0 | 30.4 |
| 20-24 | 5.0 | 8.8 | 7.1 | 6.5 | 6.9 |
| 25-44 | 23.0 | 31.0 | 30.7 | 30.7 | 29.5 |
| 45-64 | 24.9 | 22.2 | 19.6 | 28.7 | 20.7 |
| 65+ | 25.7 | 11.5 | 9.9 | 13.1 | 12.5 |
| 2030 | | | | | |
| <20 | 19.7 | 24.7 | 29.3 | 18.4 | 27.7 |
| 20-24 | 5.8 | 7.9 | 7.8 | 6.2 | 7.5 |
| 25-44 | 21.9 | 30.4 | 29.8 | 29.0 | 28.8 |
| 45-64 | 21.3 | 21.4 | 20.7 | 29.5 | 21.2 |
| 65+ | 31.3 | 15.6 | 12.4 | 16.9 | 14.8 |

Continued

| Age Group | Anglo | Black | Hispanic | Other | Total |
|--|-------|-------|----------|-------|-------|
| <u>Assuming Net Migration Equal to 1990-2000</u> | | | | | |
| Non-Border | | | | | |
| 2000 | | | | | |
| <20 | 26.0 | 35.3 | 40.3 | 29.3 | 30.6 |
| 20-24 | 6.1 | 7.6 | 10.4 | 8.1 | 7.5 |
| 25-44 | 30.4 | 32.2 | 33.8 | 37.9 | 31.6 |
| 45-64 | 24.3 | 17.7 | 12.2 | 19.9 | 20.5 |
| 65+ | 13.2 | 7.2 | 3.3 | 4.8 | 9.8 |
| 2010 | | | | | |
| <20 | 23.8 | 31.5 | 36.3 | 25.3 | 28.7 |
| 20-24 | 6.6 | 8.6 | 8.5 | 6.6 | 7.4 |
| 25-44 | 25.8 | 28.9 | 36.3 | 33.8 | 29.9 |
| 45-64 | 29.2 | 23.5 | 15.4 | 26.2 | 24.1 |
| 65+ | 14.6 | 7.5 | 3.5 | 8.1 | 9.9 |
| 2020 | | | | | |
| <20 | 22.3 | 27.9 | 32.9 | 20.9 | 27.0 |
| 20-24 | 5.6 | 7.5 | 8.0 | 6.0 | 6.8 |
| 25-44 | 25.4 | 29.7 | 35.9 | 27.9 | 30.2 |
| 45-64 | 27.4 | 24.6 | 18.6 | 30.9 | 23.8 |
| 65+ | 19.3 | 10.3 | 4.6 | 14.3 | 12.2 |
| 2030 | | | | | |
| <20 | 20.3 | 25.0 | 29.9 | 17.2 | 25.1 |
| 20-24 | 5.8 | 7.1 | 8.0 | 5.6 | 6.9 |
| 25-44 | 24.9 | 29.8 | 33.9 | 25.7 | 29.7 |
| 45-64 | 24.5 | 23.6 | 21.8 | 30.3 | 23.7 |
| 65+ | 24.5 | 14.5 | 6.4 | 21.2 | 14.6 |

**Percent of Net Change in the Population in
Border/Non-Border Regions in Texas from 2000-2030
Due to Each Race/Ethnicity Group**

| Race/ Ethnicity | Number | Percent |
|--------------------|-------------------|--------------|
| Border | | |
| Anglo | -231,582 | -7.7 |
| Black | 50,239 | 1.7 |
| Hispanic | 3,001,782 | 99.4 |
| Other | 199,497 | 6.6 |
| Total | 3,019,936 | 100.0 |
| Non-Border | | |
| Anglo | 1,598,970 | 9.3 |
| Black | 1,311,765 | 7.6 |
| Hispanic | 12,199,934 | 70.7 |
| Other | 2,135,165 | 12.4 |
| Total | 17,245,834 | 100.0 |

The mark of a truly
educated man is to be
moved deeply by
statistics.

George Bernard Shaw

**Steve Murdock
Texas State Data Center**

Phone 210 – 458 - 6530

Fax 210 – 458 - 6540

Website txsdc.utsa.edu